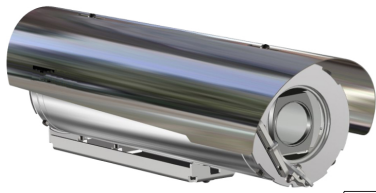


Product information



Part number: A.008106

IP HD Zoom Camera SS316L



Description

It is a 3 megapixel Full HD IP camera built in a fixed housing designed for use in harsh areas in onshore, offshore, marine and heavy industrial environments. The camera housing is constructed from electro-polished 316 stainless steel for maximum corrosion protection and is fitted as standard with sunshield, thermostatically controlled heater element.

Integrated HD Box Camera

Fitted as standard the A.008106 is equipped with a 33x optical zoom 3 megapixel (2048 x 1536), IP day/night camera. The 33x zoom realises the optimum field of view in any situation. The camera is ONVIF Profile S compliant and supports the open standard (OSA) HTTP API for ease of integration

Multi-stream High-definition

The integrated HD camera has quad-stream capability for simultaneous streaming of H.264 / H.264 or H.264 / MJPEG. Multiple combinations of resolution and frame rate can be configured to satisfy different live viewing and recording scenarios.

Image Enhancement

The camera provides automatic day/night functionality for use in low light situations. Backlight compensation enhances the image in difficult lighting situations. The WDR-2 dual exposure mode brings out details in dark areas and details in the bright areas by combining the best of two exposures.

Security Solutions

In combination with a video management system the camera creates a versatile CCTV solution for hazardous areas realized by the camera's ONVIF Profile S compliance

Washer / Wiper Option

The camera is prepared for installing a wiper, washer hose and nozzle.

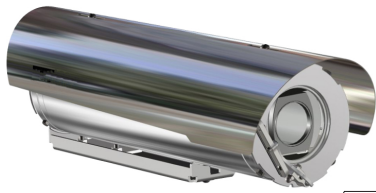
Direct to Fiber

As an option, the camera can be fitted with a 100FX optical fiber connection. The duplex single-mode fiber is preconfigured with dual SC connectors.

Features

- ✓ Corrosion-protected 316L stainless steel
- ✓ Low maintenance
- ✓ 3-megapixel IP camera, 60 frames per second
- ✓ 33x optical zoom + 10x digital zoom
- ✓ True Day/Night with IRC
- ✓ Integrated heater
- ✓ Optional wiper, washer tank and termination box
- ✓ Direct to fiber (optional)
- ✓ ONVIF Profile S compliant

Product information



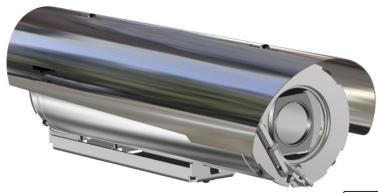
Part number: A.008106

IP HD Zoom Camera SS316L



Camera Housing	
Ingress Protection Rating	IP66/ IP67
Body Material	Electro-polished 316L Stainless Steel
Glands	2x M20x1.5
Cable length	3 m; optional 5 or 10 m
Sunshield	Standard
Internal Demister / Heater	Standard
Wiper	Optional
Washer System Operating	Optional
Temperature	-60 °C to +75 °C
Weight	5 kg
Electrical	
Supply Voltage	24 VAC 50/60 Hz; Optional 120 VAC 50/60 Hz; 230 VAC 50/60 Hz
Power Consumption	40 W maximum
Electrical Connections	3 wire power cable from the conduit, 0.75 mm ²
Camera	
Image sensor	1/2.8" ultra-low light CMOS
Effective pixels	2065 (H) x 1553 (V)
Shutter speed	1 - 1/60000 s
Minimum scene illumination	0.04 lux (colour), 0.002 lux (b/w), F/1.6
Dynamic range (WDR)	120 dB, dual exposure HDR
Lens	33x Optical zoom, F1.6 (wide), F5 (tele)
Lens focal length	4.3 to 170 mm
Horizontal field of view	63.7° (W) to 1.7° (T)
Features	Back light compensation, auto/manual white balance, (3D/2D) noise, IR light compensation
Exposure	Auto (iris or shutter priority) / Manual
Day/Night	IR-cut filter Auto
White balance	Auto, ATW, Manual, One push

Product information



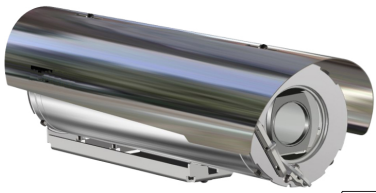
Part number: A.008106

IP HD Zoom Camera SS316L



Video	
Video compression	H.265, H.264 (main / high profile); MJPEG
Number of compression instances	Any combination of H.265 or H.264 streams with possibly one MJPEG stream.
Supported resolutions	2048x1536 (3MP); 1920x1080 (1080p); 1280x1024; 1280x720 (720p); 1024x768; 800x600; 720x576 (D1); 640x480 (VGA); 352x240 (CIF)
Max streaming (H264/H265/MJPEG)	2048x1536
Compression Bit Rate Control	Constant bit rate (CBR), variable bit rate (VBR), Low bit rate (LBR)
Number of video output streams	Up to 20 (RTSP)
Total output data rate (max)	60 Mb/s
Video frame rate	1 to 60 fps / 1 to 50 fps
Network	
Standard	ONVIF (Profile S, Profile G, Profile Q)
Protocols	IPv4/IPv6, HTTP, HTTPS, 802.1x, Qos, FTP, SMTP, UPnP, SNMP, DNS, DDNS, NTP, RTSP, RTCP, RTP, TCP/IP, DHCP, PPPoE, NTCIP 1205.
Password levels	User and Administrator
Web browser	IE 9, 10 and 11; limited support for Edge, Chrome, Firefox
Local storage	Micro SD/SDHC/SDXC up to 128 GB
Security	User authentication, IP filtering, Digest authentication (RTSP, HTTP), HTTPS encryption (TLS1.2); IEEE 802.1x port-based network access control

Product information



Part number: A.008106

IP HD Zoom Camera SS316L



Dimensions

All dimensions in millimetres

