

Product information



Part number: A.008912

15.6" Monitor, Ex Zone 2

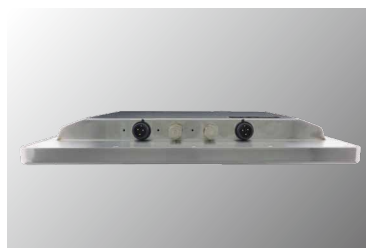


Features

- ✓ 15.6 inch explosion proof monitor
- ✓ ATEX Zone 2 & Class 1, Division 2
- ✓ Explosion-proof 5 wire resistive touch/ Projected Capacitive Multitouch
- ✓ Stainless steel 316L enclosure
- ✓ IP66 certified, dustproof and waterproof
- ✓ Rated for wide temperature use -20°C to 60°C

The stainless monitor has a set of features designed to withstand industrial use in hazardous locations and extreme temperatures while providing high-tech solutions that increase productivity, improve safety, and reduce operational costs.

It features a 15.6" flat panel touchscreen monitor in a 1920 x 1080 pixel resolution. The monitor is ATEX and IECEx certified. This monitor delivers a rugged solution for harsh environments.



Product information

Display Specification

Size	15.6-inch LCD display
Resolution	1280 x 1024
Brightness	400 nit
Ratio	16:94
Viewing Angle	160/140

Interface

External OSD BOX	1 x M12 to M12 (OSD signal) 3m cable
VGA	1 x M12 Type VGA 3m cable
USB	1 x M12 Type USB (For touch) 3m cable
Power Input	1 x M12 Type DC power input 1m cable

Keyboard and Input

Touch	• Projected Capacitive Multitouch
-------	-----------------------------------

Mechanical and Environment

Housing	Stainless steel 316L
Cooling	Fanless
Dimension (W x L x H) Net	290 x 440 x 75 mm
Weight	9.1 kg
Mounting	VESA 100 x 100
Operating Temperature	-20° to 60°C
Storage Temperature	-30° to 70° C
Humidity	10% to 90% @ 40°C
Hazardous Location Safety	ATEX / IECEx Zone2 Ex nA ic IIC T4 Gc ATEX / IECEx Zone22 Ex tc IIIC T1 35°C Dc EN 60079-0:2012/A11:2013 EN 60079-11:2012 EN 60079-15:2010 EN 60079-31:2014 EN 60079-0:2018 CE/FCC Class A CSA Std. C22.2 No213-1987 Class I, Division2, Groups A-B-C-D, T4 Class II, Division2, Groups F-G, T135°C Class III ANSI/ISA 12.12.01-2013

Power Management

Power Input	9-36V DC
Power Consumption	max 13W

Drawing

