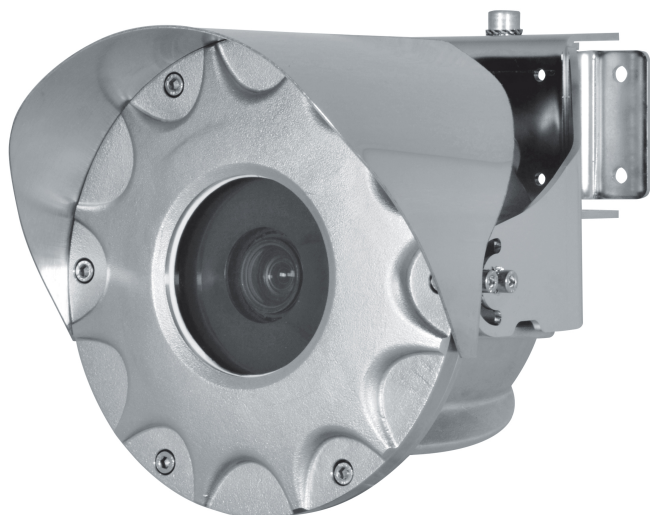


## EX HD FIXED CAMERA

Part no. A.008082



CAMERA+WALL BRACKET

CAMERA+POLE OR CEILING MOUNTING BRACKET

### DESCRIPTION

The explosion-proof Full HD camera is perfect for efficient video surveillance and control of processes in hazardous environments where the atmosphere is potentially explosive due to the presence of inflammable gases or dust, typical of the Oil&Gas, marine or industrial and foodstuff sectors.

The Full HD, 1080p camera, with 3x motorised zoom lens, offers multiple video streams (H.264, H265, MJPEG) and provides exceptional image quality, picking out every detail in a scene, even in the harshest environmental conditions.

An absolute advantage offered by this camera is its extremely easy and safe installation. The camera can be supplied with multipolar cabling. The camera can also be powered in PoE+, thereby allowing further simplification of installation operations. The camera is supplied with supports for wall, ceiling and railing installation and with a sunshield.

The housing is entirely manufactured in stainless steel AISI316L offering complete resistance to corrosion. Thanks to its compactness (only 116mm) and contained weight (only 6.5 kg), it can be installed in narrow locations typical of industrial surroundings.

The IP66/IP67/IP68/IP69 level guarantees complete protection against bad weather and water immersion.

Another important feature of the camera is the extended certification temperature range of -40°C to 65°C.

### CERTIFICATIONS



### MAIN FEATURES

Certifications for use in Zones 1 and 2, IIB T6 or T5 Group (Gas) and in Zones 21 and 22, IIIC T85°C or T100°C Group (Dust)

Certification temperature: from -40°C (-40°F) up to +65°C (149°F)

AISI 316L stainless steel construction

Supports for ceiling, wall and parapet installation supplied

Camera Full HD 1080p, 3x Day/Night

Video compression H.264, H265, MJPEG

Up to 3 simultaneous video streams

Optional 4m (13ft) or 10m (33ft) preinstalled armoured multipolar cable with cable gland

Power supply: 24Vdc, 24Vac, PoE+

IP66/IP67/IP68/IP69

## Specifications

Image Performance		6.0 MP
Image Sensor		1/1.8" progressive scan CMOS
Maximum Resolution (H x V)		3200 (H) x 1800 (V)
Aspect Ratio		16:9
Min Illumination		0.055 lux (F/1.8) in color mode; 0.025 lux (F/1.8) in monochrome
Dynamic Range	WDR Off	85 dB
	WDR On	Up to 120 dB
Image Rate		Up to 60 fps
Aspect Ratio (Resolution Scaling)		Down to (16:9) 384x216 or (5:4) 320x256
3D Noise Reduction Filter		Yes

Lens		6.0 MP
Lens		F1.8, 4.9-8 mm remote focus and zoom
Angle of View	Horizontal	(16:9) 50° - 91°
	Vertical	(16:9) 29° - 51°

Image Control	
Video Compression	H.264 and H.265 Compression, Motion JPEG
Streaming	Multi-stream H.264, Multi-stream H.265, Motion JPEG
Electronic Shutter Control	Automatic, Manual (1/7 to 1/8, 196 sec)
Iris Control	P-Iris, Automatic, Open, Closed
Day/Night Control	Mechanical IR cut filter. Automatic, Manual
Flicker Control	60 Hz, 50 Hz
White Balance	Automatic, Manual
Backlight Compensation	Adjustable
Privacy Zones	Up to 64 zones

Network	
ONVIF	ONVIF compliance Profile S, Profile T, and Profile G ( <a href="http://www.onvif.org">www.onvif.org</a> )
Security	Password protection, HTTPS encryption, digest authentication, WS authentication, user access log, 802.1x port based authentication
Protocols	IPv6, IPv4, HTTP, HTTPS, SOAP, DNS, NTP, RTSP, RTCP, RTP, TCP, UDP, IGMP, ICMP, DHCP, Zeroconf, ARP
Device Management Protocols	SNMP v2c, SNMP v3

## Specifications

Mechanical	
Dimensions (LxWxH)	Camera and bracket: 254.4 mm x 177 mm x 177.5 mm; 10.0" x 6.97" x 6.99"
Weight	Camera and bracket: 6.5 kg; 14.3 lbs., with 4 m cable: 8.5 kg; 18.7 lbs., with 10 m cable: 11.5 kg; 25.3 lbs.
Construction	AISI 316L stainless steel
Finish	Electro-polished surface
Cable Entry	1/2" NPT
Cable Gland	Ex db and tb 1/2" NPT (with preinstalled cable only)
Armored Cable Option	External diameter: 16.8 mm (0.66") ± 0.4 mm (0.016") Diameter under armature: 12.4 mm (0.49") ± 0.3 mm (0.012") Color: black RAL 9005 Composition: 3 × 1.5 mm <sup>2</sup> (15 AWG), 4 × 2 × 0.22 mm <sup>2</sup> (24 AWG) (cat. 5E F/STP)

Electrical	
Local Storage	MicroSD/microSDHC/microSDXC slot, up to 2 TB supported - video speed class card required. Class V10 or better recommended.
Ports	100BASE-TX, RJ45 connector (CAT5E cabling)
Power Consumption	20 W with 24 VDC (0.9 A), 21 W with 24 VAC (1.32A) or with IEEE 802.3 at
Input Voltage (Power)	VDC: 24 V ± 10%, VAC: 24 V ± 10%. PoE+: IEEE802.3 at compliant

Environmental	
Operating Temperature	-40 °C to +65 °C (-40 °F to 149 °F)
Storage Temperature	-40 °C to +55 °C (-40 °F to 131 °F)
Housing Climate Control	Built-in heater and fan
Humidity	10% - 95% non-condensing
Cold Start	Up to 1 hour startup delay at temperature lower than -10 °C (14 °F)

Certifications	
Certifications/Directives	cULus, CE, UKCA, ROHS, RCM, BIS, KC
Safety	UL/CSA 62368-1, EN/IEC 62368-1, IS 13252(PART 1):2010/ IEC 60950-1 : 2005
Hazardous	ATEX (EN IEC 60079-0, EN 60079-1, EN 60079-31), IECEx (IEC 60079-0, IEC 60079-1, IEC 60079-31), EAC EX (TR CU 012/2011), INMETRO (ABNT NBR IEC 60079-0, ABNT NBR IEC 60079-1, ABNT NBR IEC 60079-31), UK Ex (EN IEC 60079-0, EN 60079-1, EN 60079-31), KCs (Employment and labor department 2016-54), without armored cable, UL listed for USA (UL 60079-0, UL 60079-1, UL 60079-31) without cable, UL listed for Canada (CAN/CSA-C22.2 NO. 60079-0, CAN/CSA-C22.2 NO. 60079-1, CAN/ CSA-C22.2 NO. 60079-31) without armored cable.
Environmental and Performance	EN/IEC 60529: IP66, IP67, IP68, IP69 EN 60068-2-52: salt spray UL50E: 4X, 6P
Electromagnetic Emissions	FCC Part 15 Subpart B Class A, IC ICES-003 Class A, EN 55032 Class A, EN 61000-6-3
Electromagnetic Immunity	EN 50130-4
Vibration Test	EN 50130-5, EN 60068-2-6
Marine Certification	Electromagnetic compatibility: EN60945 Salty fog resistance: EN60068-2-52

## Explosion proof certification

Certification	Marking	Ambient Temperature	Cable Entry Temperature
DEMKO 17 ATEX 1823X	Ⓜ II 2 G Ex db IIB T6...T5 Gb Ⓜ II 2 D Ex tb IIIC T85°C...T100°C Db	-40°C ≤ Ta ≤ +65°C or +70°C	+83.2°C with Ta ≤ +65°C +88.2°C with Ta ≤ +70°C
IECEX ULD 17.0002X	Ex db IIB T6...T5 Gb Ex tb IIIC T85°C...T100°C Db		
EAC Ex RU C-IT.H A91.B.00274/22	1Ex db IIB T6...T5 Gb X Ex tb IIIC T85°C...T100°C Db X		
INMETRO UL-BR 20.0227X	Ex db IIB T6...T5 Gb Ex tb IIIC T85°C...T100°C Db		
KCs 20-KA4BO-0312X, 20-KA4BO-0313X	Ex db IIB T6...T5 Gb Ex tb IIIC T85°C...T100°C Db		
UKEx UL21UKEX2215X	Ⓜ II 2 G Ex db IIB T6...T5 Gb Ⓜ II 2 D Ex tb IIIC T85°C...T100°C Db		
cULUS File E319666 Hazardous Location	Class I, Zone 1, AEx db IIB T6...T5 Gb Zone 21, AEx tb IIIC T85°C...T100°C Db Class I, Div 2 Group C, D T6...T5 Class II, Div 2, Group F and G T6...T5		
cULUS File E319666 Hazardous Location	Ex db IIB T6...T5 Gb X Ex tb IIIC T85°C...T100°C Db X Class I, Div 2 Group C, D T6...T5 Class II, Div 2, Group F and G T6...T5		

## Technical drawings

*The dimensions of the drawings are in millimeters*

